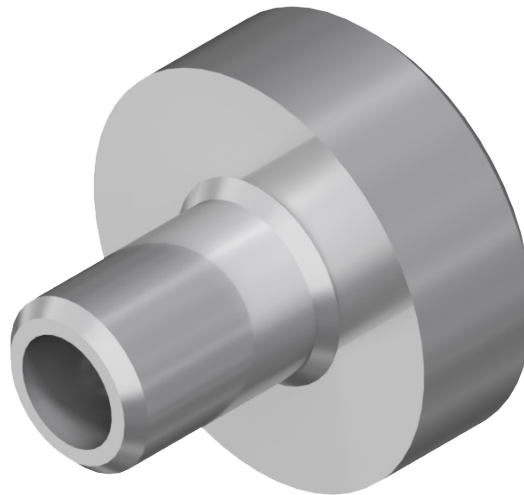


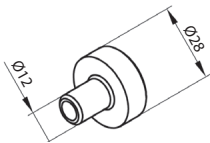
We would like to inform you that since December 01, 2019, TSP division wall pin have been introduced to SKT Opoterm system..

Changes have also been made to SKT Opoterm documentation for the production. New configurations have been added:

- single roller shutter with **PAC plate**,
- Set of roller shutters with **PBW** compound internal end caps and **PAC plate**,
- Set of roller shutters with division wall and **TSP** pins which allows for greater maximum width of the SKB box



TSP



Division wall pin

Packing: 20 pcs.

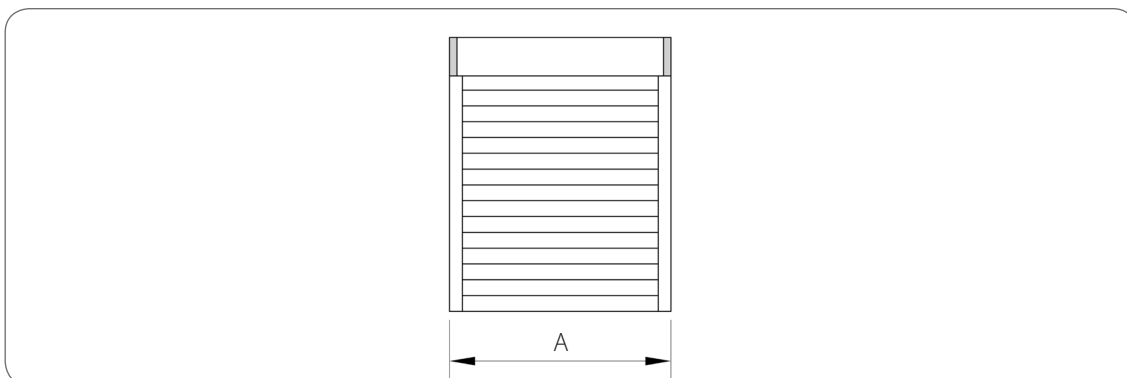
TSP

used with: SP, SPM, SPM/W, SP/B

Systems SKB / SKT

SKT box maximum width

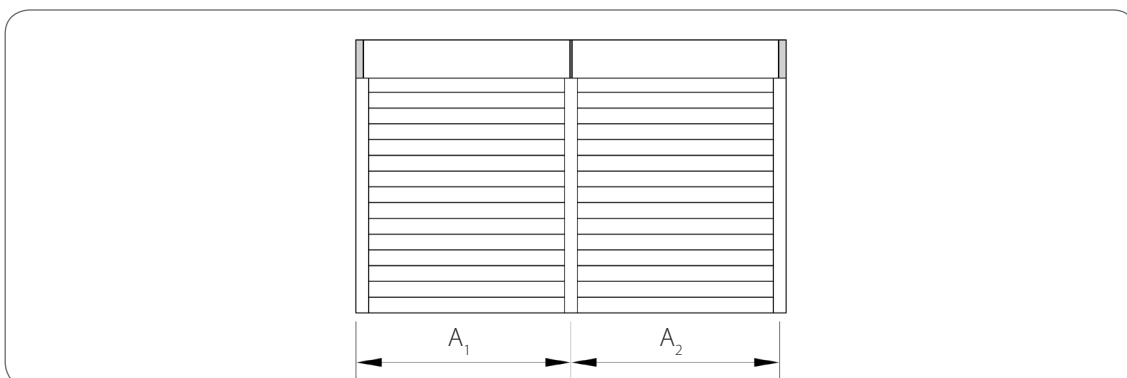
a) Single roller shutter



System	Type	Width	
SKT	White color, use of PSBA or built-in from outside	with WSB, WSD reinforcement and PAC	A ≤ 3300 [mm]
		with WSB and WSD steel reinforcement	A ≤ 2500 [mm]
		without WSB and WSD reinforcement	A ≤ 2000 [mm]
	others colours	with WSB and WSD steel reinforcement	A ≤ 2000 [mm]
		without WSB and WSD reinforcement	A ≤ 1600 [mm]

NEW

b) Set of roller shutters with division walls

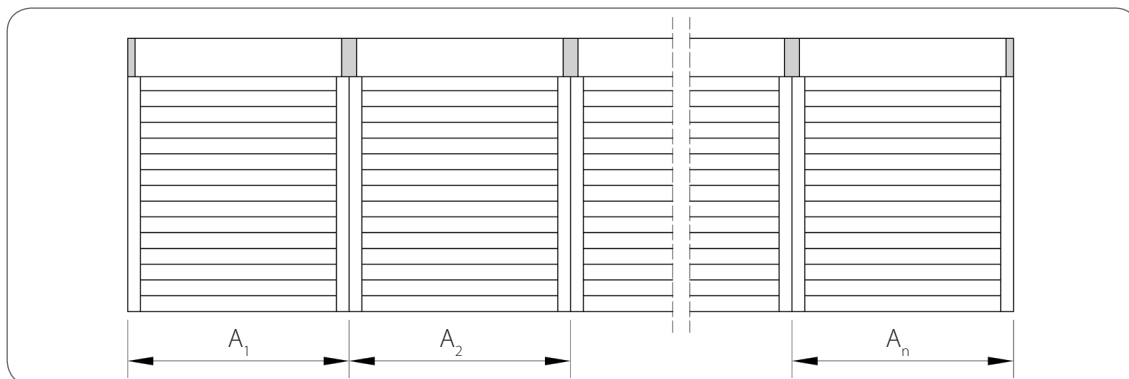


System	Type	Width	
SKT	White color, use of PSBA or built-in from outside	with WSB, WSD reinforcement and TSP	A₁, A₂ ≤ 2500 [mm]
			A₁ + A₂ ≤ 5000 [mm]
		with WSB and WSD steel reinforcement	A₁, A₂ ≤ 2500 [mm]
	others colours	with WSB and WSD steel reinforcement	A₁ + A₂ ≤ 3200 [mm]
			A₁, A₂ ≤ 2000 [mm]
SKT + MKT SKT Nova	White color, use of PSBA or built-in from outside	with WSB, WSD reinforcement and TSP	A₁, A₂ ≤ 2000 [mm]
			A₁ + A₂ ≤ 4000 [mm]
		with WSB and WSD steel reinforcement	A₁, A₂ ≤ 2000 [mm]
	others colours	with WSB and WSD steel reinforcement	A₁ + A₂ ≤ 3200 [mm]
			A₁, A₂ ≤ 2000 [mm]
	with WSB and WSD steel reinforcement	A₁ + A₂ ≤ 2500 [mm]	

NEW

NEW

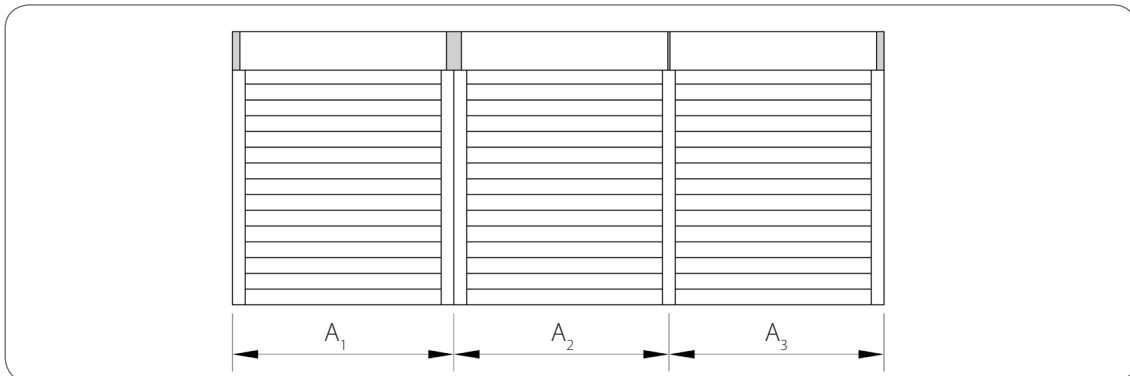
c) Set of roller shutters with internal compound end caps



System	Type	Width	
SKT	with WSB, WSD reinforcement and PAC	$A_1, A_2, \dots, A_n \leq 3300$ [mm]	
		$A_1 + A_2 + \dots + A_n \leq 6000$ [mm]	
	with WSB and WSD steel reinforcement	$A_1, A_2, \dots, A_n \leq 2500$ [mm]	
		$A_1 + A_2 + \dots + A_n \leq 6000$ [mm]	
	without WSB and WSD reinforcement	$A_1, A_2, \dots, A_n \leq 2000$ [mm]	
		$A_1 + A_2 + \dots + A_n \leq 6000$ [mm]	
	others colours	with WSB and WSD steel reinforcement	$A_1, A_2, \dots, A_n \leq 2000$ [mm]
			$A_1 + A_2 + \dots + A_n \leq 6000$ [mm]
without WSB and WSD reinforcement		$A_1, A_2, \dots, A_n \leq 1600$ [mm]	
		$A_1 + A_2 + \dots + A_n \leq 6000$ [mm]	

NEW

d) Set of roller shutters with compound internal end caps and division wall

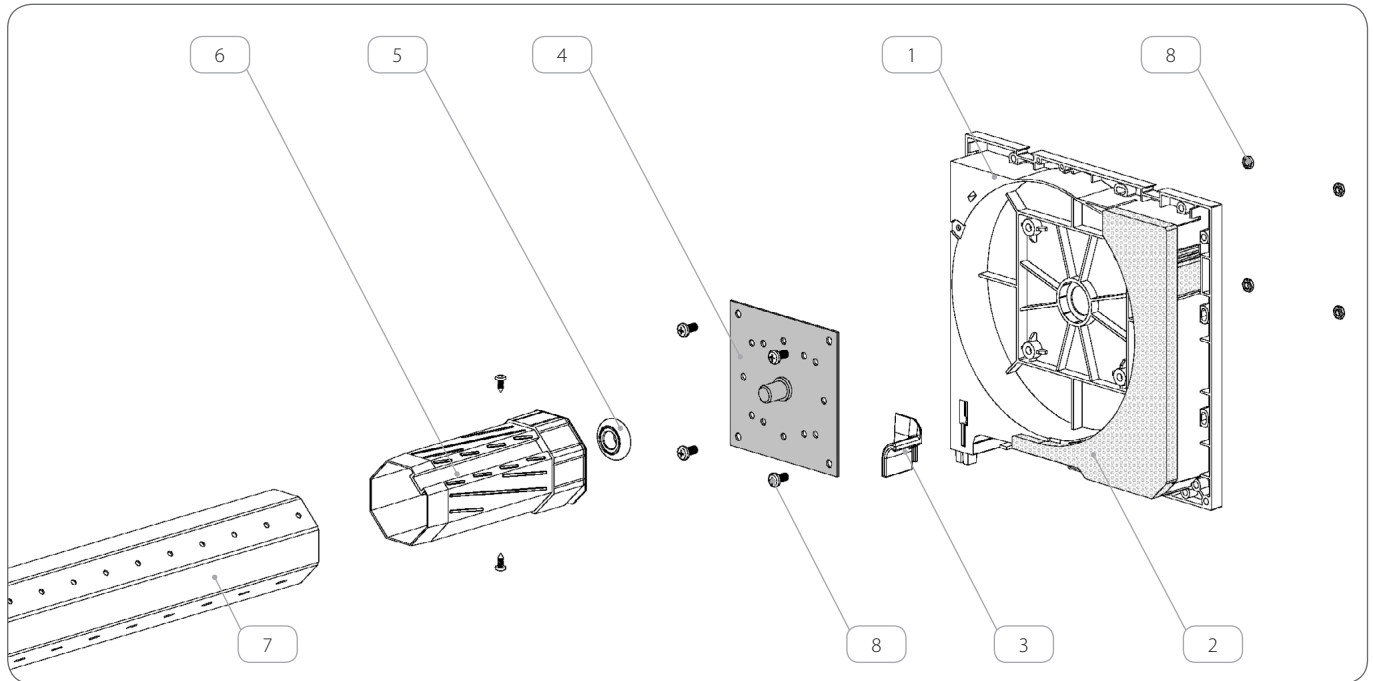


System	Type	Width	
SKT	White color, use of PSBA or built-in from outside	with WSB, WSD, TSP reinforcement and PAC	$A_1 \leq 3300$ [mm]
			$A_2, A_3 \leq 2500$ [mm]
			$A_2 + A_3 \leq 5000$ [mm]
			$A_1 + A_2 + A_3 \leq 6000$ [mm]
	others colours	with WSB and WSD steel reinforcement	$A_1, A_2, A_3 \leq 2500$ [mm]
			$A_2 + A_3 \leq 3200$ [mm]
		$A_1 + A_2 + A_3 \leq 5700$ [mm]	
		$A_1, A_2, A_3 \leq 2000$ [mm]	
		$A_2 + A_3 \leq 2500$ [mm]	
		$A_1 + A_2 + A_3 \leq 4500$ [mm]	
SKT + MKT SKT Nova	White color, use of PSBA or built-in from outside	with WSB, WSD reinforcement and TSP	$A_1, A_2, A_3 \leq 2000$ [mm]
			$A_2 + A_3 \leq 4000$ [mm]
			$A_1 + A_2 + A_3 \leq 6000$ [mm]
	others colours	with WSB and WSD steel reinforcement	$A_1, A_2, A_3 \leq 2000$ [mm]
			$A_2 + A_3 \leq 3200$ [mm]
			$A_1 + A_2 + A_3 \leq 5200$ [mm]
		$A_1, A_2, A_3 \leq 2000$ [mm]	
		$A_2 + A_3 \leq 2500$ [mm]	
		$A_1 + A_2 + A_3 \leq 4500$ [mm]	

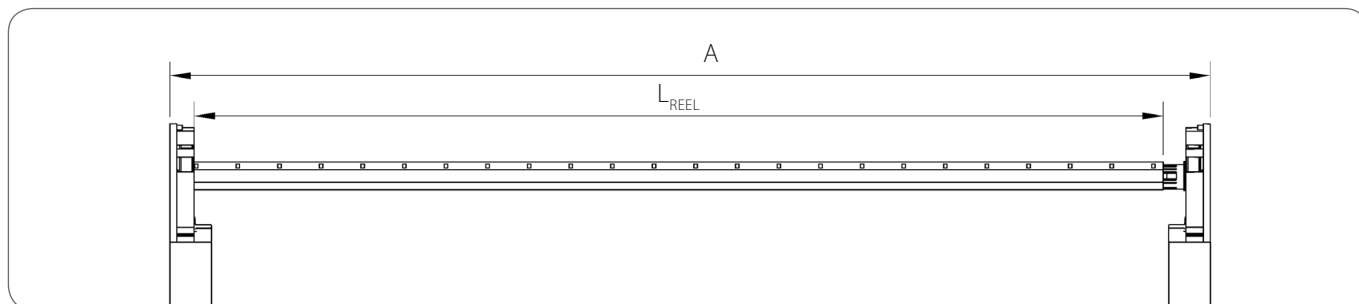
NEW
NEW

Cutting specification and list of components for a single roller shutter with PAC plate

! PAC plate must be mounted to end cap without drive.



	Name of the component	Catalogue code			Quantity
		SKT230/170	SKT230/210	SKT255/240	
1.	End cap for shutter box SKT	PB/230/170	PB/230/210	PB/255/240	1 [pair]
2.	Thermal insulation for end cap	OCPB/S/230/170 OCPB/N/230/170	OCPB/S/230/210 OCPB/N/230/210	OCPB/S/255/240 OCPB/N/255/240	1 [pair]
3.	Entry guide	SLMI, SLMA			1 [pair]
4.	Plate for gear mechanism ACEC	PAC			1 [pcs.]
5.	Ball bearing Ø28 mm	LO28			1 [pcs.]
6.	Cap Ø60	OBS60			1 [pcs.]
7.	Octagonal galvanized steel reel	SW6006, SW6010			1 [pcs.]
8.	Fasteners M x 10 mm	ELZM5			4 [pcs.]

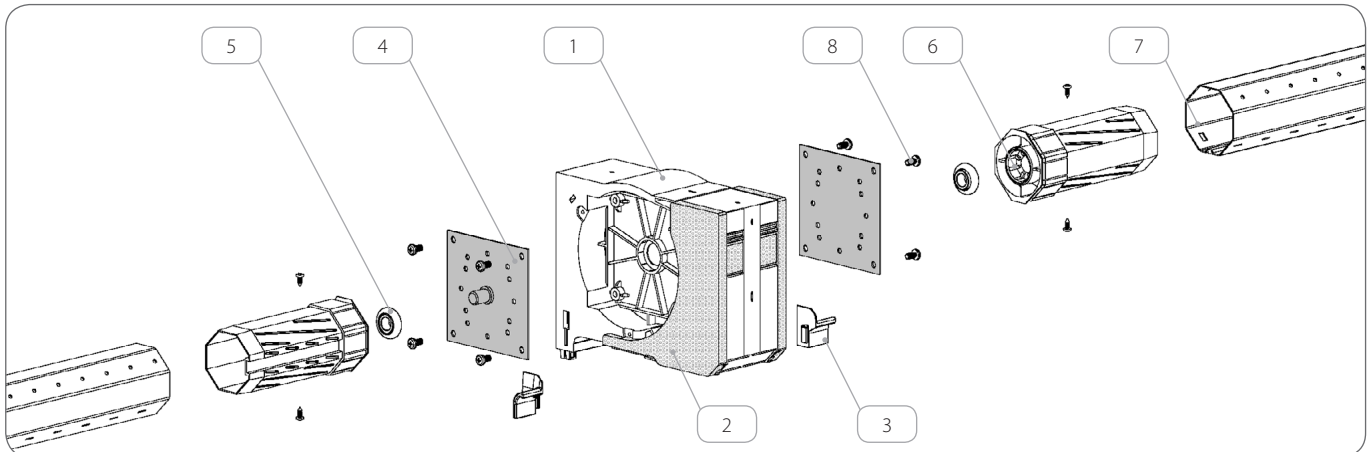


	Drive	steel reel length SW60
1.	Pulley KN	A - 105 [mm]
2.	Gear mechanism ACEC	A - 110 [mm]
3.	Gear mechanism MK	A - 110 [mm]
4.	Motor: YYGL45S	A - 100 [mm]
5.	Motor: YYGL45M	A - 110 [mm]
6.	Motor: DM45S, DM45EV/Y, DM45R, DM45BD, DM45SD	A - 100 [mm]
7.	Motor: DM45M, DM45RM	A - 107 [mm]
8.	Motor: OXIMO_M50_S_AUTO_RTS, OXIMO_M50_WT, OXIMO_M50_RTS, ILMO_M50_S_WT, ILMO_M50_WT, OXIMO_M50_S_AUTO_io, OXIMO_M50_io	A - 105 [mm]
9.	Motor RDO_M50_CSI	A - 110 [mm]
10.	Motor: T5, T5_JOB, T5_Ehz, T5_AUTO, T5_AUTO_Short_Hz, T5_AUTO_Short	A - 100 [mm]
11.	Motor: DMI5, DMI5_HZ	A - 110 [mm]

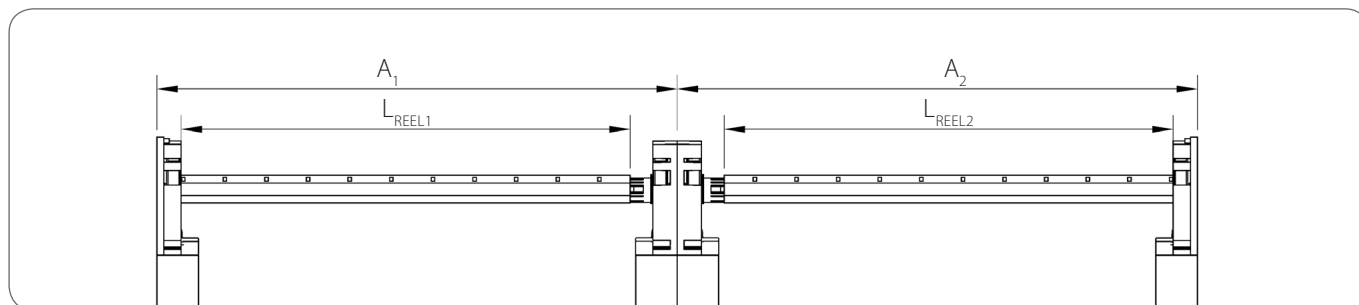
Cutting specification and list of components for a set of the roller shutters with PBW compound internal end caps and PAC plate

! PAC plate must be mounted to side without drive.

! Elements number specified in case with one **PBW** compound internal end caps.



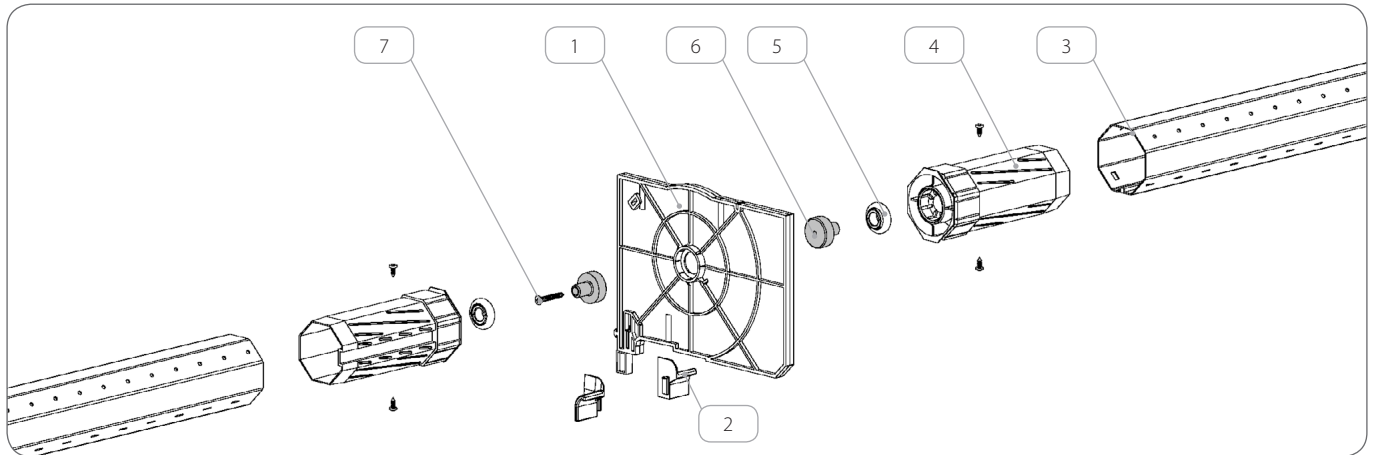
	Name of the component	Catalogue code			Quantity
		SKT230/170	SKT230/210	SKT255/240	
1.	Compound internal end caps for shutter box SKT	PBW/230/170	PBW/230/210	PBW/255/240	1 [pcs.]
2.	Thermal insulation for end cap	OCPB/S/230/170 OCPB/N/230/170	OCPB/S/230/210 OCPB/N/230/210	OCPB/S/255/240 OCPB/N/255/240	1 [pair]
3.	Entry guide	SLMI, SLMA			1 [pair]
4.	Plate for gear mechanism ACEC	PAC			2 [pcs.]
5.	Ball bearing Ø28 mm	LO28			2 [pcs.]
6.	Cap Ø60	OBS60			2 [pcs.]
7.	Octagonal galvanized steel reel	SW6006, SW6010			2 [pcs.]
8.	Fasteners M x 10 mm	ELZM5			8 [pcs.]



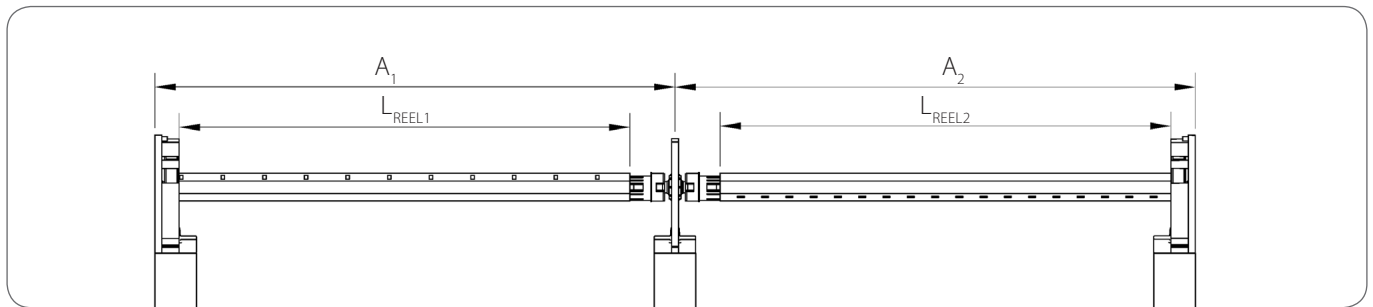
	Drive	steel reel length SW60
1.	Pulley KN	A ₁ - 105 [mm] A ₂ - 105 [mm]
2.	Gear mechanism ACEC	A ₁ - 110 [mm] A ₂ - 110 [mm]
3.	Gear mechanism MK	A ₁ - 110 [mm] A ₂ - 110 [mm]
4.	Motor: YYGL45S	A ₁ - 100 [mm] A ₂ - 100 [mm]
5.	Motor: YYGL45M	A ₁ - 110 [mm] A ₂ - 110 [mm]
6.	Motor: DM45S, DM45EV/Y, DM45R, DM45BD, DM45SD	A ₁ - 100 [mm] A ₂ - 100 [mm]
7.	Motor: DM45M, DM45RM	A ₁ - 107 [mm] A ₂ - 107 [mm]
8.	Motor: OXIMO_M50_S_AUTO_RTS, OXIMO_M50_WT, OXIMO_M50_RTS, ILMO_M50_S_WT, ILMO_M50_WT, OXIMO_M50_S_AUTO_io, OXIMO_M50_io	A ₁ - 105 [mm] A ₂ - 105 [mm]
9.	Motor: RDO_M50_CSI	A ₁ - 110 [mm] A ₂ - 110 [mm]
10.	Motor: T5, T5_JOB, T5_Ehz, T5_AUTO, T5_AUTO_Short_Hz, T5_AUTO_Short	A ₁ - 100 [mm] A ₂ - 100 [mm]
11.	Motor: DMI5, DMI5_HZ	A ₁ - 110 [mm] A ₂ - 110 [mm]

Cutting specification and list of components for a set of the roller shutters with SP division wall and TSP pins

 Elements number specified for case with one **SP** division wall.



	Name of the component	Catalogue code			Quantity
		SKT230/170	SKT230/210	SKT255/240	
1.	Division wall for shutter box SKT				1 [pcs.]
	SKT	SP/230/170	SP/230/210	SP/255/240	
	SKT+MKT	SPM/230/170	SPM/230/210	SPM/255/240	
	SKT Nova	SPM/W/230/170	SPM/W/230/210	SPM/W/255/240	
2.	Entry guide				1 [pair]
	SKT	SLMI, SLMA			
	SKT+MKT				
	SKT Nova	SLMI/A, SLMA/A			
3.	Octagonal galvanized steel reel	SW4005, SW4006, SW5006, SW6006, SW6010			2 [pcs.]
4.	Cap				2 [pcs.]
	SW40	OBS40			
	SW50	OBS50			
	SW60	OBS60			
5.	Ball bearing Ø28 mm		LO28		2 [pcs.]
6.	Pin for division wall		TSP		2 [pcs.]
7.	Galvanized screw 4,2 x 40 mm		WKR/Zn/S/4,2x40		1 [pcs.]



Drive		steel reel	steel reel length
1.	Pulley KN	SW4005, SW4006	A ₁ - 70 [mm] A ₂ - 70 [mm]
		SW5006	A ₁ - 110 [mm] A ₂ - 110 [mm]
		SW6006, SW6010	A ₁ - 100 [mm] A ₂ - 100 [mm]
2.	Gear mechanism ACEC	SW4005, SW4006	A ₁ - 80 [mm] A ₂ - 80 [mm]
		SW5006	A ₁ - 120 [mm] A ₂ - 120 [mm]
		SW6006, SW6010	A ₁ - 110 [mm] A ₂ - 110 [mm]
3.	Gear mechanism MK	SW4005, SW4006	A ₁ - 80 [mm] A ₂ - 80 [mm]
		SW5006	A ₁ - 120 [mm] A ₂ - 120 [mm]
		SW6006, SW6010	A ₁ - 110 [mm] A ₂ - 110 [mm]
4.	Motor	SW4005, SW4006	A ₁ - 70 [mm] A ₂ - 70 [mm]
		SW5006	A ₁ - 110 [mm] A ₂ - 110 [mm]
		SW6006, SW6010	A ₁ - 100 [mm] A ₂ - 100 [mm]